

# 5<sup>th</sup> Call launch Terms of Reference explained

5<sup>th</sup> Call for projects 11<sup>th</sup> June – 30th September, 2024

Online session, 14:00 - 15:00 Tuesday 11th June

**Interreg**



Co-funded by  
the European Union

Northern Periphery and Arctic

# Welcome

- Briefly about the Interreg Northern Periphery and Arctic programme
- How does Interreg NPA work?
- What topics can you work on?
- How do you know if your idea is a good fit?
- Where to get guidance and more information
- When are the next opportunities to get involved

**Interreg**



Co-funded by  
the European Union

Northern Periphery and Arctic



# Interreg NPA in short

**Interreg**



Co-funded by  
the European Union

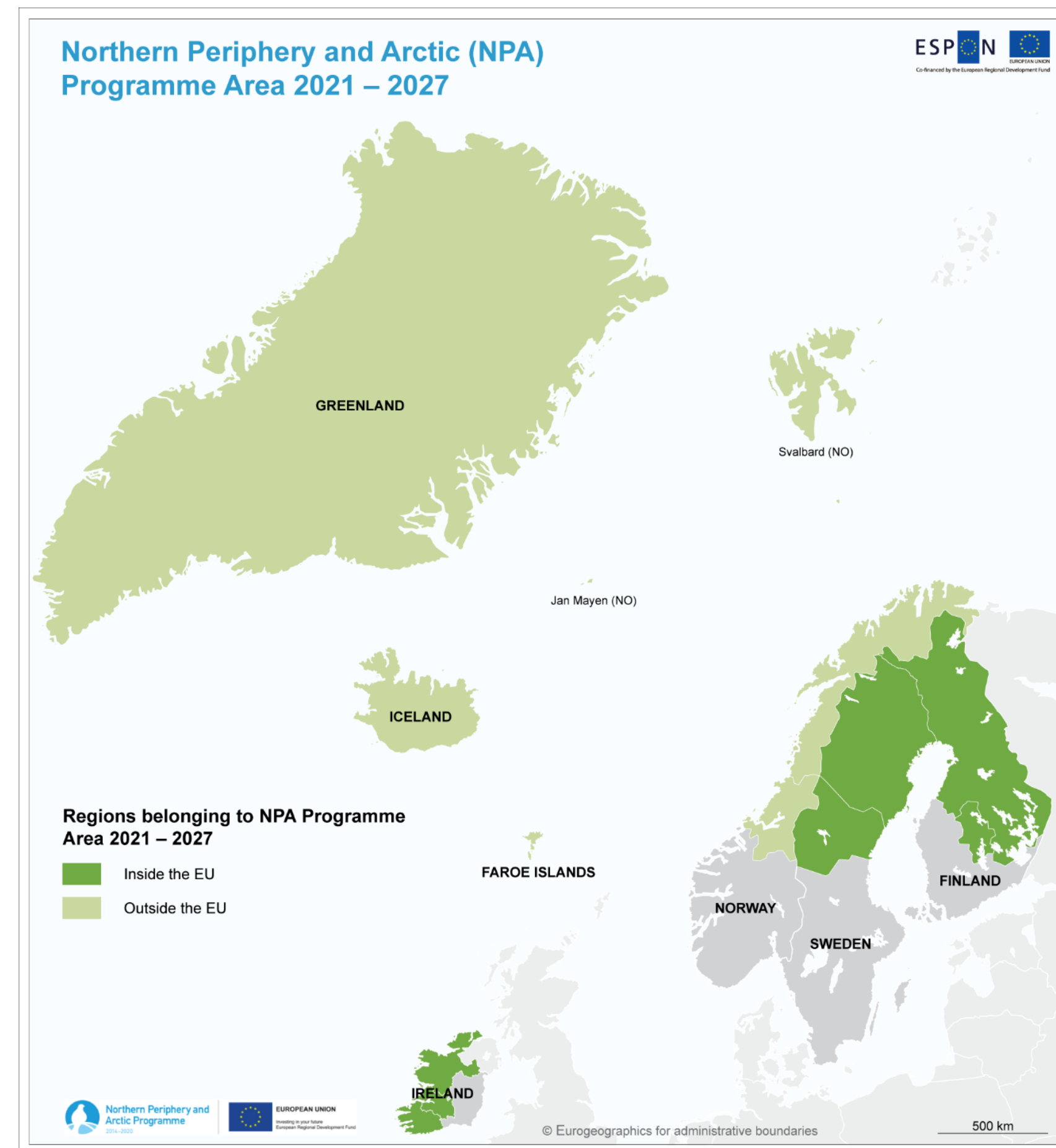
Northern Periphery and Arctic



# PROGRAMME AREA

## Participating countries

- Faroe Islands
- Finland
- Greenland
- Iceland
- Ireland
- Norway
- Sweden



Interreg



Co-funded by  
the European Union

Northern Periphery and Arctic

# PROGRAMME STRATEGY

Similarities between the participating regions as well as common challenges and shared opportunities offer a strong basis for cooperation.

Cooperation enables communities to work together and find innovative solutions to become more prosperous and resilient.

**Interreg**



Co-funded by  
the European Union

Northern Periphery and Arctic



# FINANCING AND IMPLEMENTATION

Total budget for projects

**46,8**  
Mln Eur

**40**  
mIn EUR

for EU partners

**6,8**  
mIn EUR

for Non-EU partners

**Interreg**



Co-funded by  
the European Union

Northern Periphery and Arctic

# NPA funds available

Type	ERDF	Norway	Iceland	Faroe Islands	Green-land	Total
<b>Total funding</b>	39.978.164	2.710.020	2.622.600	772.286	826.119	<b>46.909.189</b>
<b>Allocated</b>	10.949.879	2.219.952	1.680.116	737.495	119.595	<b>15.707.036</b>
<b>Allocated %</b>	27%	82%	64%	95%	14%	<b>33%</b>
<b>Available</b>	<b>29.028.285</b>	<b>490.068</b>	<b>942.484</b>	<b>34.791</b>	<b>706.524</b>	<b>31.202.153</b>
<b>Available %</b>	73%	18%	36%	5%	86%	<b>67%</b>
<b>Proposed Call 4</b>	4.664.468	437.644	665.481	0,00	318.205	<b>6.085.798</b>
<b>Allocated NEW</b>	15.614.346	2.657.596	2.345.597	737.495	437.799	<b>21.792.834</b>
<b>Allocated NEW %</b>	39%	98%	89%	95%	53%	<b>46%</b>
<b>Remaining</b>	<b>24.363.818</b>	<b>52.424</b>	<b>277.003</b>	<b>34.791</b>	<b>388.320</b>	<b>25.116.355</b>
<b>Remaining %</b>	61%	2%	11%	5%	47%	<b>54%</b>

# How does it work?

**Interreg**



Co-funded by  
the European Union

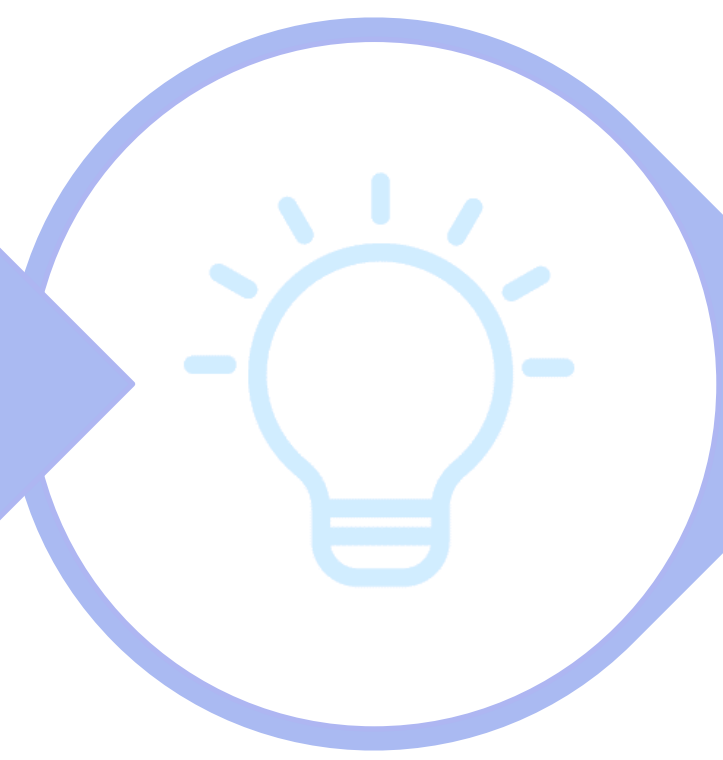
Northern Periphery and Arctic



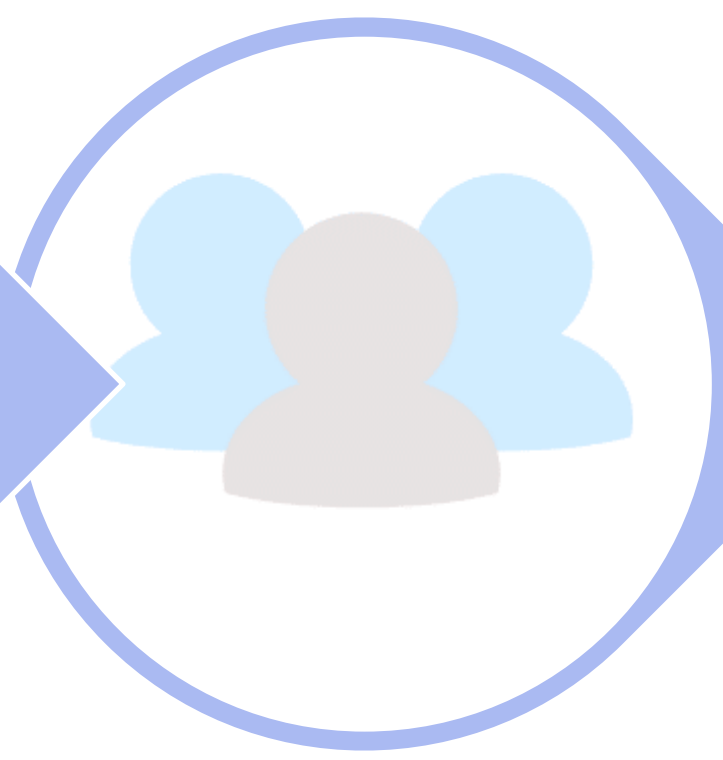
# From an idea to a project



You share a **PROBLEM**  
or see an  
**OPPORTUNITY**  
that affects people in the NPA



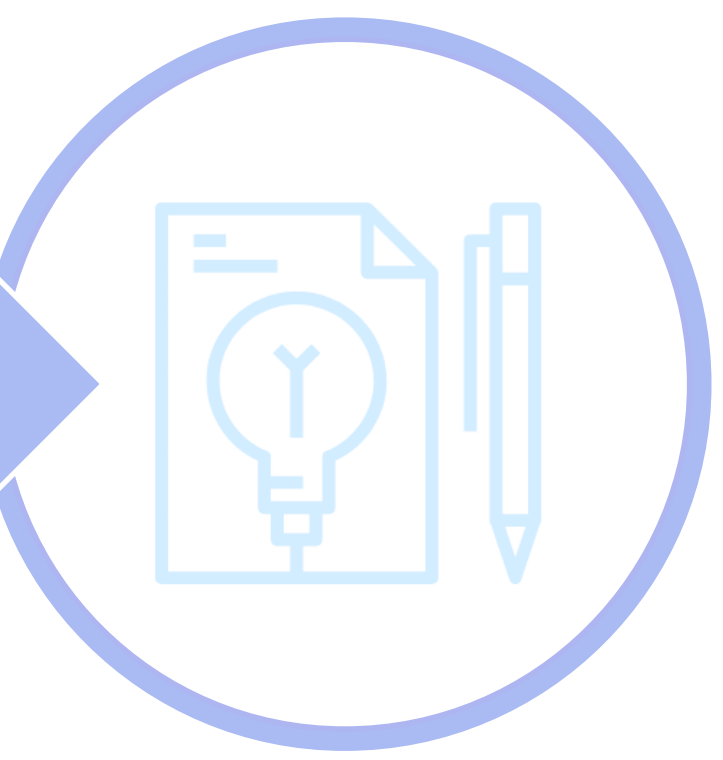
You have an **IDEA**  
how to address it



You look for  
qualified  
**PARTNERS**

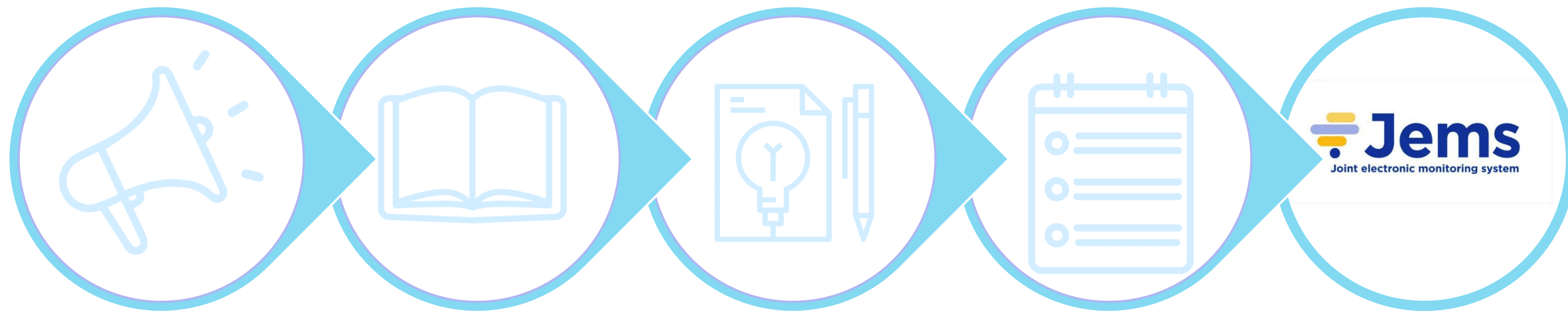


Are we the  
**RIGHT PROGRAMME?**  
You look for advice,  
networks, skills, capacity  
and funding.



Together, you  
**JOINTLY DEVELOP**  
the idea into  
a common project

# How to apply for funding



We open a  
**CALL  
FOR PROJECTS**

You read the  
**TERMS of REFERENCE,**  
documents and  
get support

You finalise the  
**PROJECT APPLICATION**  
with your partners

You run the  
pre-submission  
**CHECKLIST**

You **SUBMIT** your  
project in Jems

**Interreg**



Co-funded by  
the European Union

Northern Periphery and Arctic

# What happens next



Congratulations!  
Your project is  
**APPROVED**

You **JOINTLY** carry out  
your project and  
**ENGAGE** with  
your target groups

You deliver the  
**SOLUTION** you  
had planned

Your solution is  
**PUT INTO USE**

Together, you  
are having an  
**IMPACT**

**Interreg**



Co-funded by  
the European Union

Northern Periphery and Arctic



# What topics can you work on?

**Interreg**

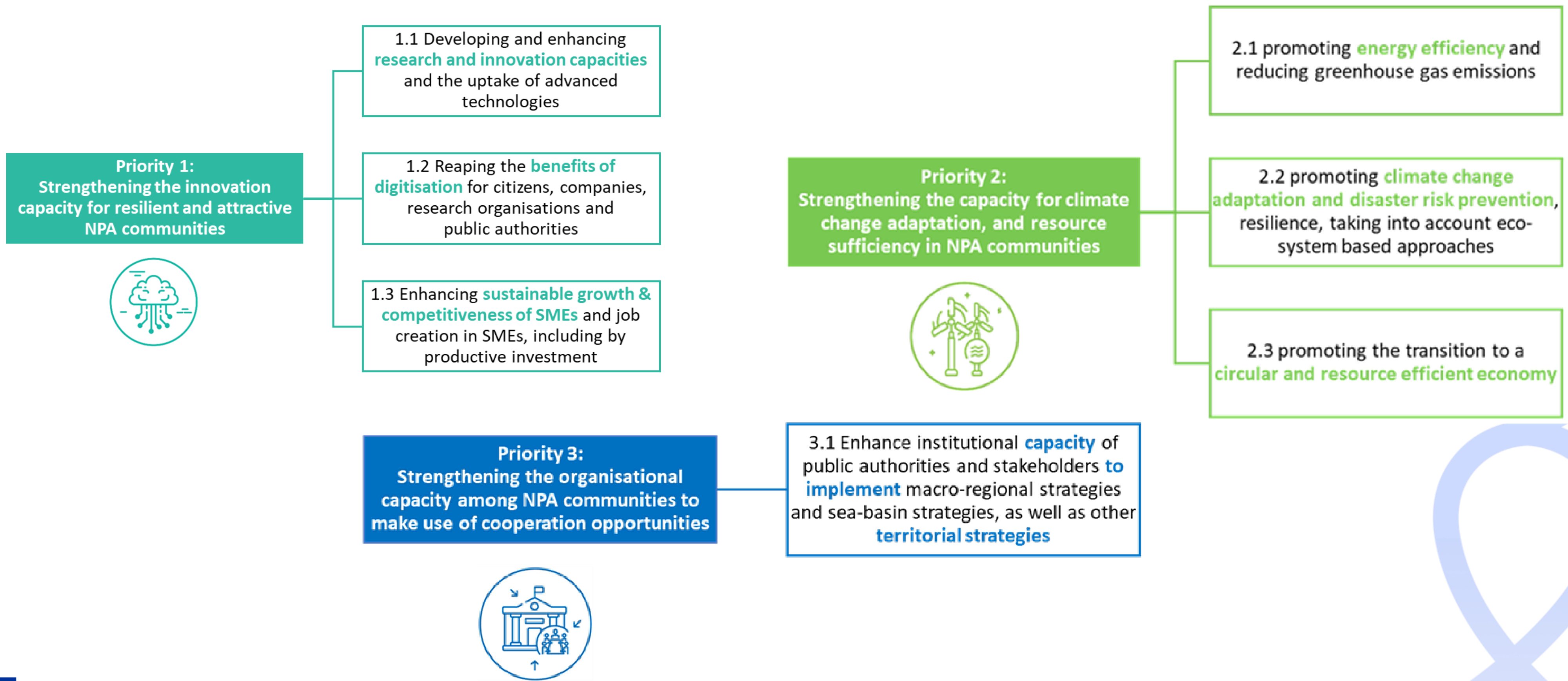


Co-funded by  
the European Union

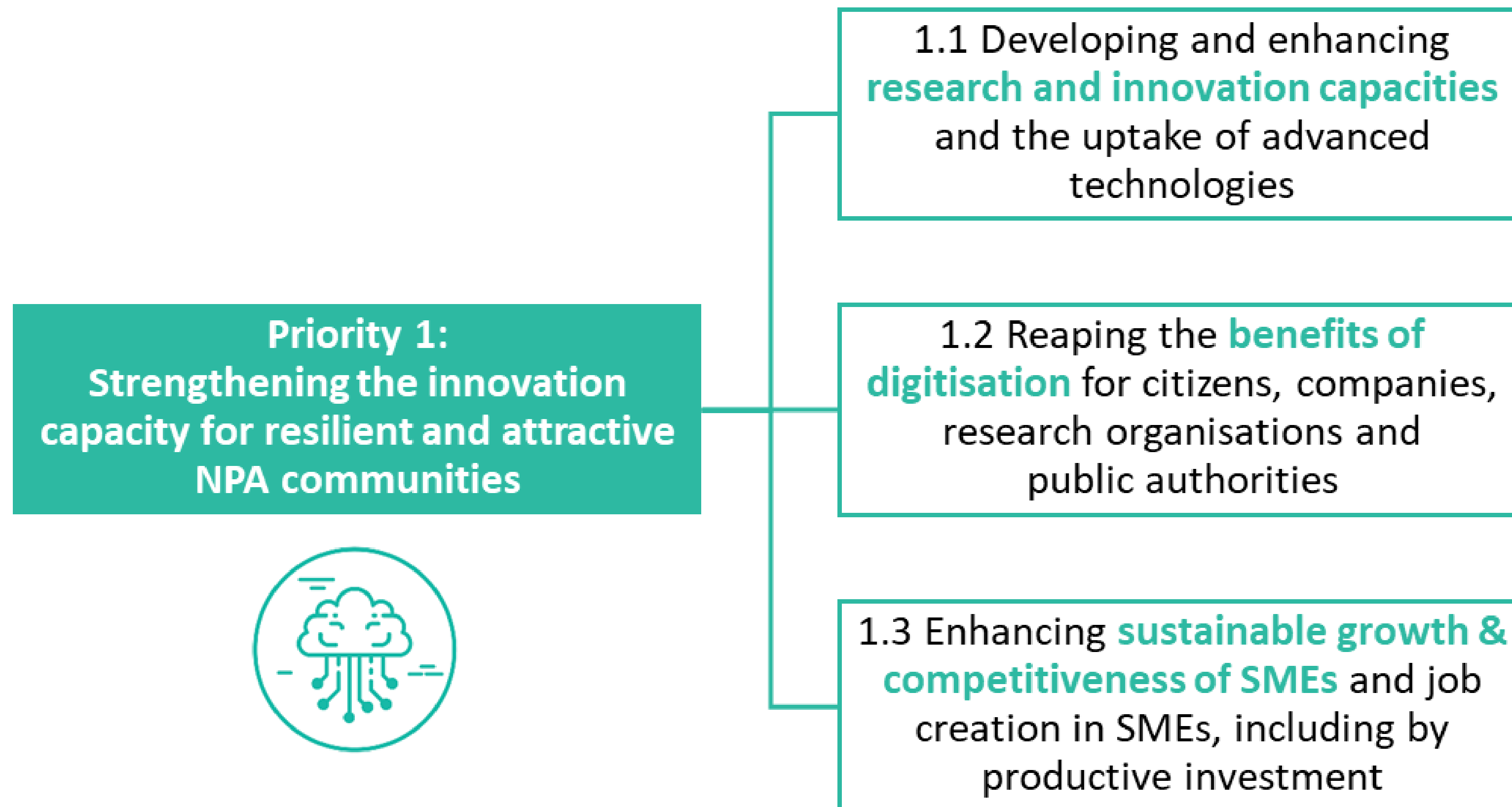
Northern Periphery and Arctic



# Priorities



# Innovation capacity



# Climate change and resource sufficiency

**Priority 2:**  
Strengthening the capacity for climate change adaptation, and resource sufficiency in NPA communities



2.1 promoting **energy efficiency** and reducing greenhouse gas emissions

2.2 promoting **climate change adaptation and disaster risk prevention**, resilience, taking into account ecosystem based approaches

2.3 promoting the transition to a **circular and resource efficient economy**

# Cooperation opportunities

**Priority 3:  
Strengthening the organisational  
capacity among NPA communities to  
make use of cooperation opportunities**

3.1 Enhance institutional **capacity** of public authorities and stakeholders **to implement** macro-regional strategies and sea-basin strategies, as well as other **territorial strategies**





# Thematic focus of Priority 3



1. Increase **preparedness and resilience** of NPA communities
2. Preserve and experience the unique **heritage** of the NPA regions
3. Increase the **wellbeing** of people living in the NPA regions
4. Attract skills and **talents** needed in the NPA regions
5. Enable **youth** to shape the NPA regions

# Target groups of Priority 3



1. **RESILIENCE**: Municipalities and networks of municipalities
2. **HERITAGE**: Networks of Sámi and Inuit communities
3. **WELLBEING**: Underrepresented groups such as young people, vulnerable people, and indigenous communities
4. **TALENTS**: Broad involvement of different stakeholders is expected
5. **YOUTH**: Youth organisations, and organisations working with youth engagement
6. ...and more

# Target groups: don't forget

## Decision makers

- Municipality
- Regional authority
- Agencies

## End users

- Who will use your solutions?
- Who will put your ideas in practice?



How do you know if  
your idea is a good fit?



**Interreg**



Co-funded by  
the European Union

Northern Periphery and Arctic

# Project relevance

## MAIN PROJECTS

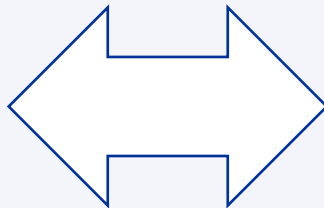
Priority 1:  
Strengthening the innovation  
capacity for resilient and attractive  
NPA communities



Priority 2:  
Strengthening the capacity for climate  
change adaptation, and resource  
sufficiency in NPA communities



Priority 3:  
Strengthening the organisational  
capacity among NPA communities to  
make use of cooperation opportunities



## SMALL SCALE

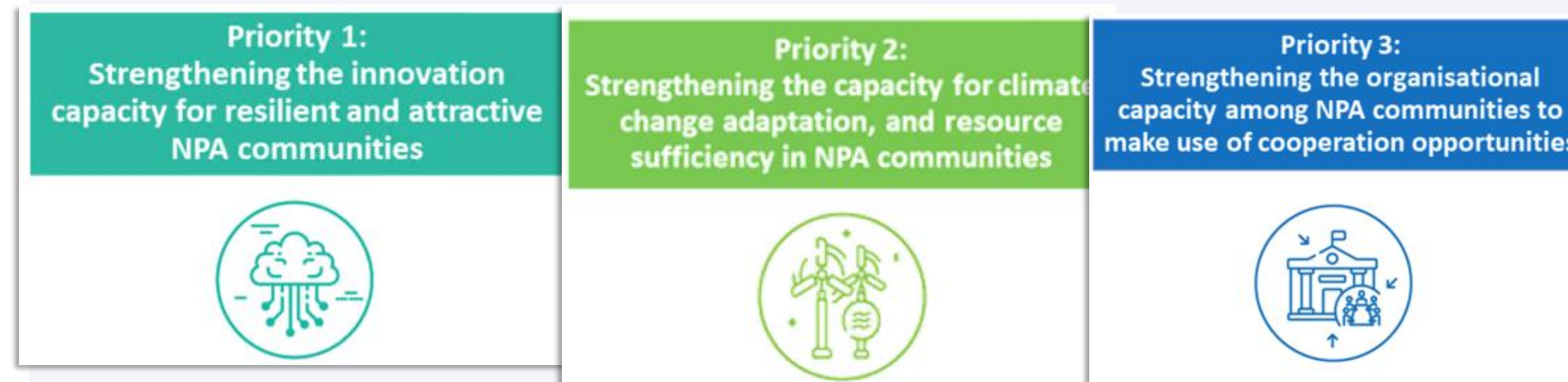
Priority 3:  
Strengthening the organisational  
capacity among NPA communities to  
make use of cooperation opportunities



**GOOD FIT WITH THE PRIORITY THEMES AND TYPES OF ACTIONS**

# Aim of projects

## MAIN PROJECTS



DEVELOPMENT OF SOLUTIONS

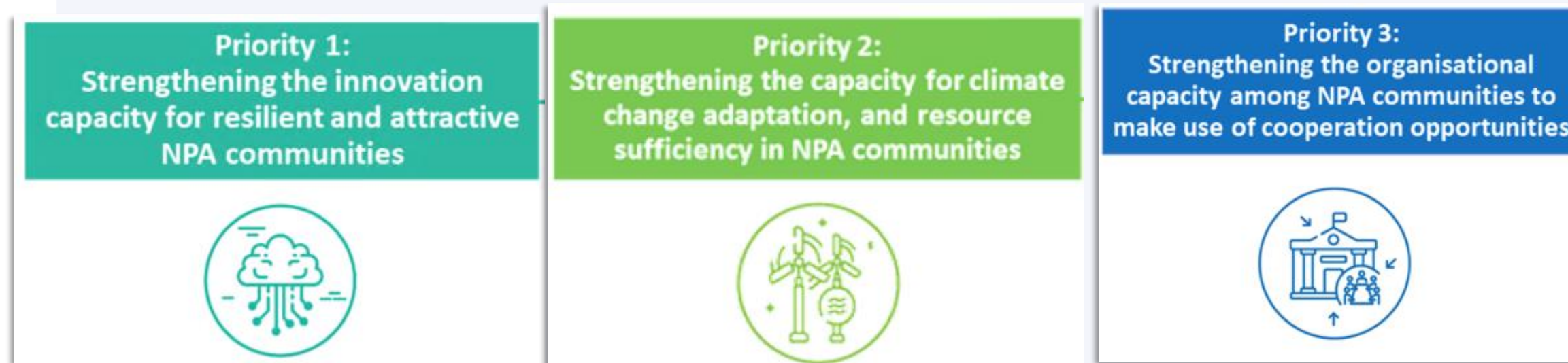
## SMALL SCALE



CAPACITY BUILDING  
STAKEHOLDER ENGAGEMENT  
BASED ON LOCAL KNOWLEDGE

# Types of projects

## MAIN PROJECTS



**36 months**  
**Average total budget 1,5 MEUR**

## SMALL SCALE



**18 months**  
**Up to 200.000 Euro**  
**Lump sum**

# Purpose of small-scale projects



Building the capacity to engage stakeholders in cooperation, based on local knowledge, supporting them to implement strategies for Northern Periphery and Arctic regions

## ACTIVITIES

Building organizational capacity; building know-how, shared experience; developing/implementing shared strategies; strategy coordination; commissioning studies or data to better understand cooperation opportunities and challenges; empowering local communities; and improving communication.



## DELIVERABLES

Studies, networks, strategies or action plans developed jointly, jointly develop solutions.



# Indicators

CHECK: Cooperation programme document + Programme Manual

## OUTPUTS

- Strategies...
- Pilots...



## RESULTS

...taken up  
...up-scaled

# Size of projects

MINIMUM

3

PARTNERS  
from programme  
partner countries

FROM

2

ZONES  
of the programme

AT LEAST

1

from an  
EU MEMBER STATE

The Lead Partner must be a  
**PUBLIC ORGANISATION**

Interreg



Co-funded by  
the European Union

Northern Periphery and Arctic

# Terms of Reference (ToR)

## Project Budget and duration

- Applicants from Non-Member states (Faroe, Norway, and Iceland are strongly advised to check if there are any national restrictions to budget levels, for example by checking national information websites, or by contacting their RCP
- Main projects are expected to have an average budget of 1.500.000 EUR and run for 3 years.
- Small-scale capacity building projects applying under Priority 3 have a total budget of no more than 200.000 EUR and run for 18 months.
- Please be aware that the participation of Faroese, Norwegian, and Icelandic partner organisations is subject to the availability of national funds.



# Where to get guidance and more information?



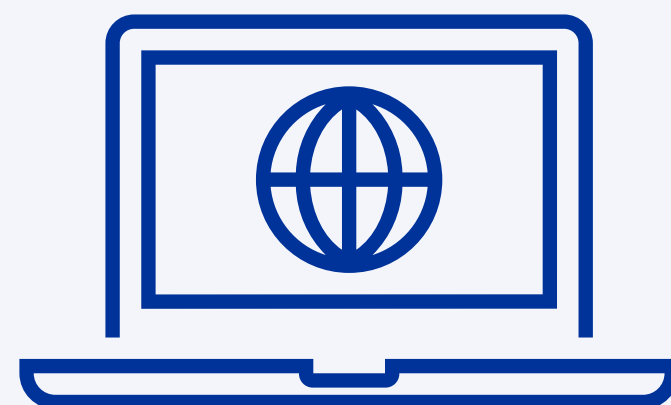
**Interreg**



Co-funded by  
the European Union

Northern Periphery and Arctic

# Programme documents and RCPs



DEDICATED  
CALL WEBPAGE

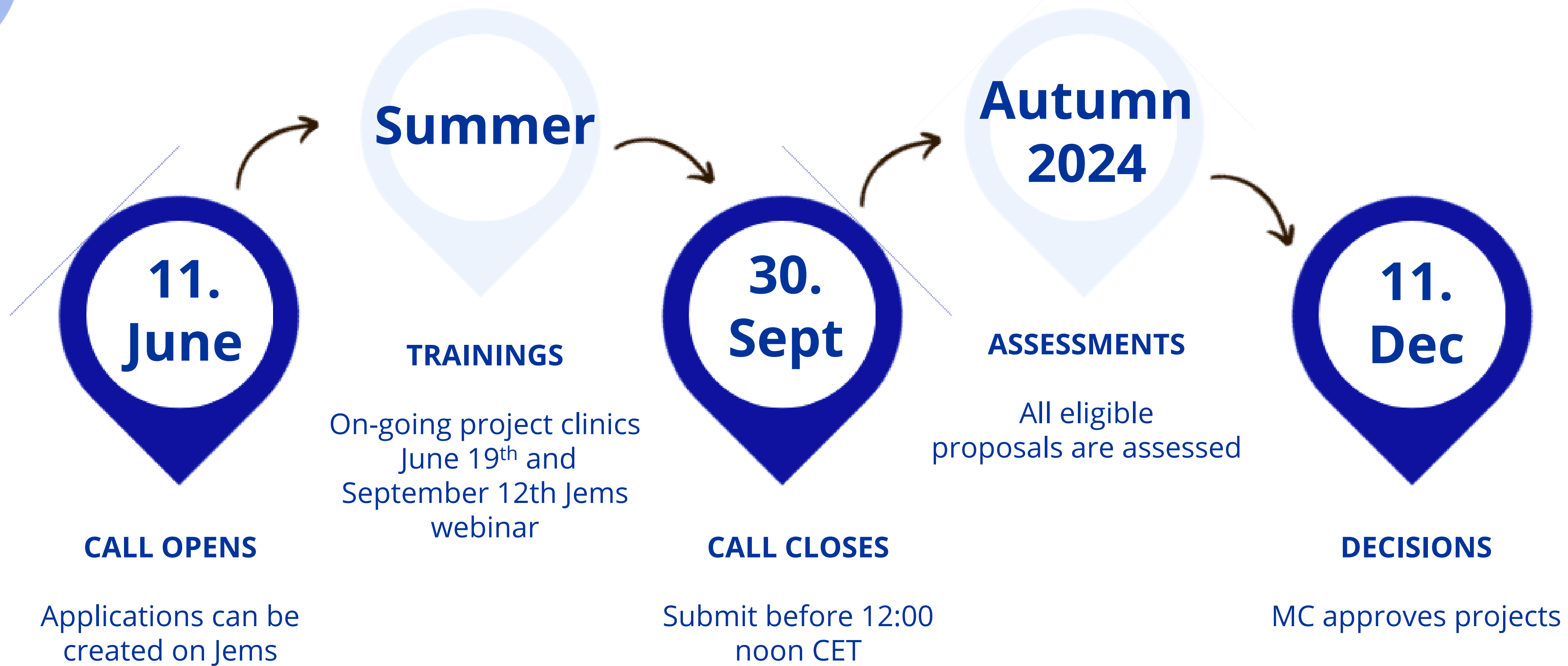


REGIONAL  
CONTACT POINT



JOINT  
SECRETARIAT

# 5th call Important dates



# Tips and pitfalls

**Interreg**



Co-funded by  
the European Union

Northern Periphery and Arctic

# Tips and pitfalls

- Mandatory supporting documents missing:
  - PDF of signed Lead partner statement
  - PDF of signed Project partner statements
- Incorrect funding source
- Not describing clearly what the project activities, deliverable and outputs are
- Clearly express in your application, as if the reader is not familiar with your project idea:-
  - 1. What are you going to do?
  - 2. Why are you going to do this?



# Tips and pitfalls

- Ensure you have listed End users and stakeholders
- Try not to be overly academic in your project consortium
- Budget size and proportionality
- Involve Finance officers to review budget
- Remember character limits
- Check with Regional Contact Points, especially NMS regarding funding available
- Project clinics on demand with JS Desk officers
- In JEMS, please use the Check & Submit function.....**Before the closing date! .....This pre-submission check is invaluable!**

# Tips and pitfalls

Dashboard / Applications / NPA0300100 – Test project 16th Nov / [Check and submit](#)

## Application form NPA0300100 – Test project 16th Nov Check & Submit

You are about to officially submit your project application: NPA0300100 – Test project 16th Nov

Make sure to submit your project in time before the call end date. Further information on the deadline can be found in the call information and in the project overview. Please be aware that after submission, changes to the application form are no longer possible.

### Pre-submission check

Before you can submit your application form, the presubmission-check needs to be valid. The check will provide you with an overview of missing or inconsistent data. Changes do not update automatically, run the check again after changes to your application form. It is the applicant's responsibility that the information in the application form is accurate and true to their best knowledge. Before submitting your application, please make sure:

1. Obligatory annexes are signed and attached to the application form, i.e. Lead Partner and partner statements.
2. The application package is in the required language, English.
3. All amounts in the Application Form are expressed in Euro.
4. All applicable sections of the application form are correctly filled in.
5. Information presented in the application form and in the annexes is consistent.

[Run pre-submission check](#)

[Submit project application](#)

Interreg



Co-funded by  
the European Union

Northern Periphery and Arctic



# When are the next opportunities to be involved?

**Interreg**



Co-funded by  
the European Union

Northern Periphery and Arctic



# Upcoming calls

- Preparatory projects are postponed
- Interreg Arctic Cooperation Clustering call
- Visit NPA website:  
<https://www.interreg-npa.eu/apply-for-funding/calls-for-projects/5th-call-for-main-projects/>
- <https://www.interreg-npa.eu/apply-for-funding/how-to-apply/>

# Thank you for listening!

[www.interreg-npa.eu](http://www.interreg-npa.eu)

**Interreg**



Co-funded by  
the European Union

Northern Periphery and Arctic