

Interreg Arctic Cooperation Clustering Call Webinar

Online, 4th February 2025

Interreg



Co-funded by
the European Union

Aurora

Interreg



Co-funded by
the European Union

Northern Periphery and Arctic



Combining
Interreg
resources and
skills
to get the best
results for Arctic
and near-Arctic
communities.



Photo: Interreg NPA Arctic STEM Communities

What is clustering and why do we care?



© http://passiondescimes.free.fr/151024_RefugeRequin.php

+



<https://archive.nytimes.com/kristof.blogs.nytimes.com/2016/03/28/sherpa-they-die-we-go-home/>

=



Lixzap on Unsplash

About you

Scan the QR code or
click the link in the
Zoom comments to
join the SLIDO poll.



Expected outcomes

»»» Enhanced collaboration

»»» Increased awareness

»»» Wider impact



Expected outcomes

»»» Enhanced collaboration

Transfer to new sectors

Include new organisations

Lasting networks

Complementary skill sets to improve uptake of results

Expected outcomes

»»» Increased awareness

More effective outreach

New and impactful
engagement strategies

Advocacy

Engage with new end-users



Expected outcomes

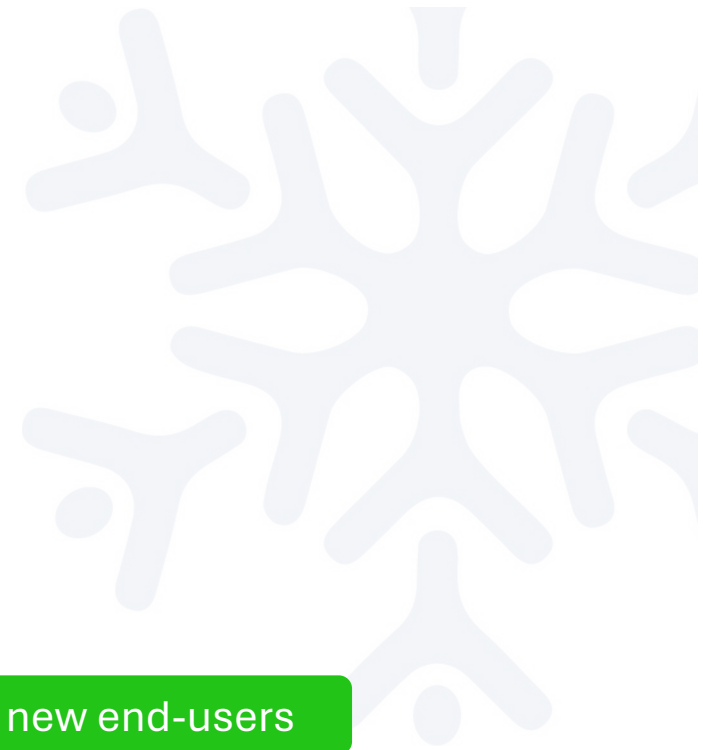
»»» Wider impact

Policy change

Expand
to new geographical areas

Roll-out to new end-users

Gaining critical mass to inform
decision makers



Themes



SME competitiveness - including culture and sustainable tourism



Research and innovation - including circular economy



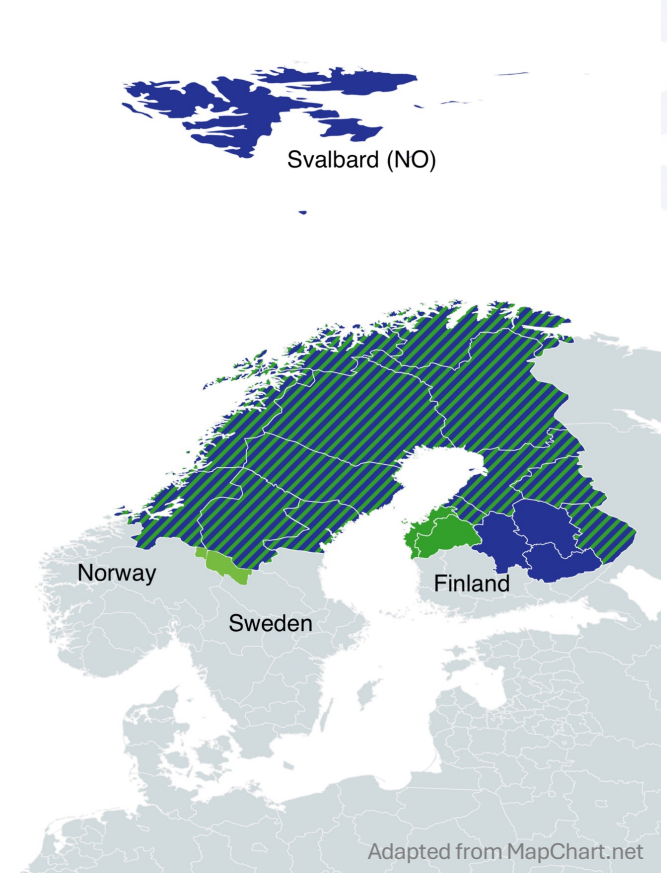
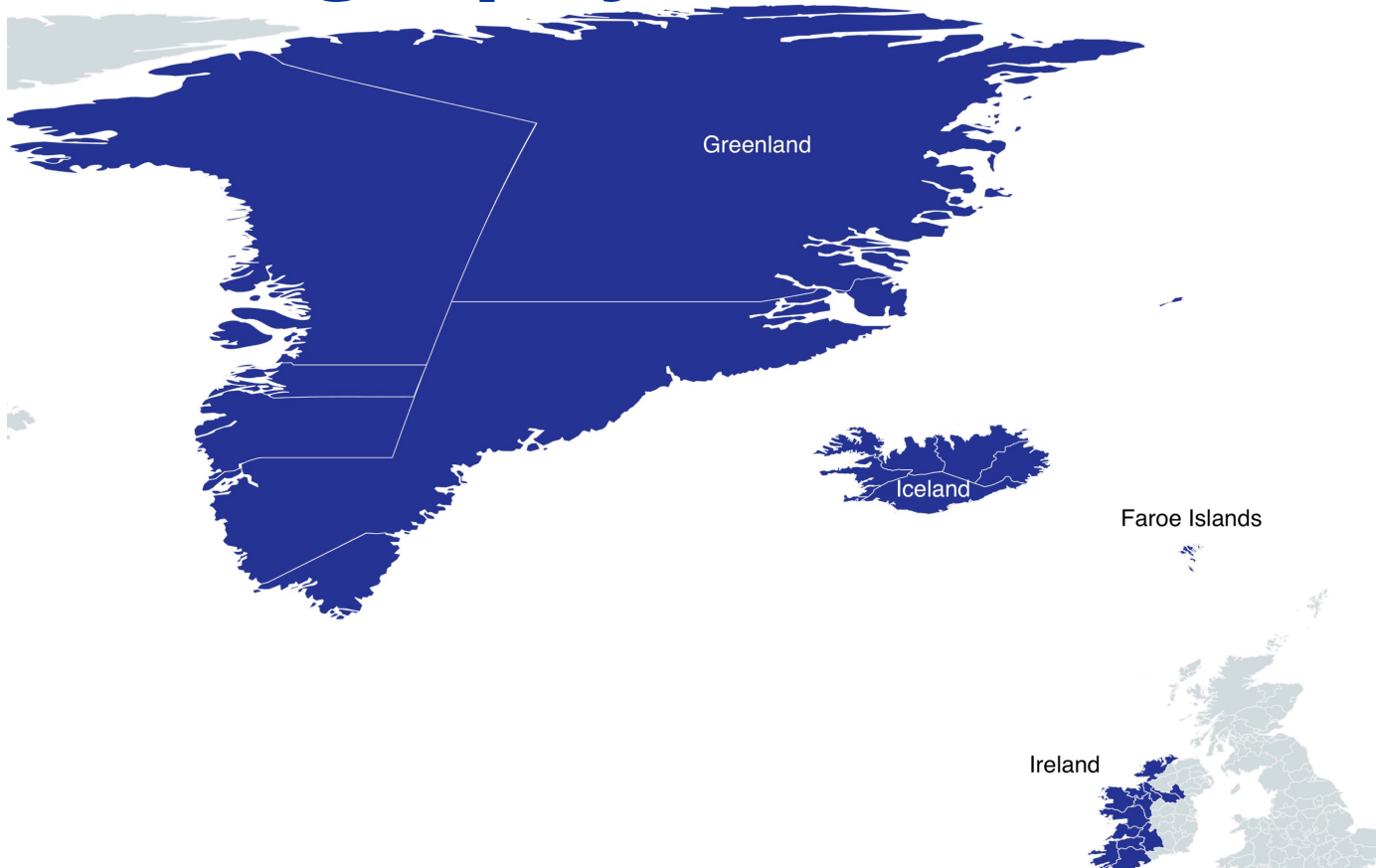
Climate change adaptation - including nature protection and biodiversity



Types of projects & partnerships

	TRANSNATIONAL	CROSS-BORDER
Where	NPA regions	Aurora regions
Who	Min 3 partners 1 NPA project 1 Aurora project	Min 2 partners 1 NPA project 1 Aurora project
How much	200.000 Euro	60.000 Euro
How long	12 months	6 – 12 months

Geography



Timeline



Strategic Importance

- The Interreg NPA has labelled clustering projects as “Operations of Strategic Importance” (OSIs)
- **Note:** this only applies to transnational clustering projects
- These projects are seen as strategic, because they can contribute to a more coordinated implementation of territorial strategies that cover multiple programme areas, such as the EU Arctic Policy.
- Specific focus will be given to communicating the projects widely and in a coordinated way.
- More visibility is a great opportunity!

Questions and Answers

Please use the Zoom chat
or raise your digital hand 🙋




Any project ideas?

- What is your most relevant project output?
- Who is the target group for this output?
- What are the selling points of your project? How would you pitch your idea to another project?
- What type of project/partnership would complement your idea?


Support for project and partnership development

Project/partner idea template and consultations!

You can find the template on the Aurora and NPA websites

Interreg  Co-funded by the European Union

Aurora

Interreg  Co-funded by the European Union

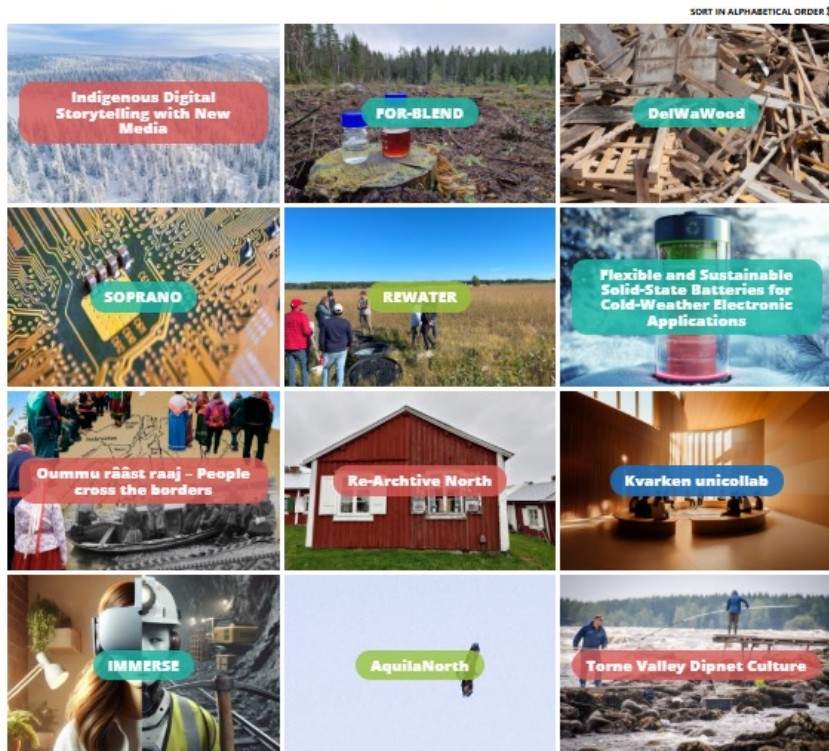
Northern Periphery and Arctic

Interreg Arctic Cooperation

Clustering project idea

1. Project Title	
2. Project type	Select one: 1. Cross-border clustering project (for applying to Interreg Aurora) 2. Transnational clustering project (for applying to Interreg NPA funding)
3. Theme	Select one: 1. SME competitiveness, including culture and sustainable tourism 2. Research and innovation, including circular economy 3. Climate change adaptation, including nature protection and biodiversity
4. Region / Country	
5. Contact Person	
6. E-mail	
7. Address	
8. Phone	
8.1.1	Project Description:

Support for project and partnership development



Get to know the Interreg Aurora projects

Project categories:

Smart – Smart and sustainable growth

Green – Green and sustainable transition

Social – Education, culture and sustainable tourism

Cooperation – Better and more sustainable cross-border cooperation

Support for project and partnership development

Get to know the Interreg NPA projects

The screenshot displays a web interface for project discovery. On the left is a sidebar with filters: a search bar, 'PROJECT STATUS' (All, Current, Finalized), 'PRIORITIES' (Innovation, Climate change, Cooperation opportunities), and 'FILTERS' (Target Groups, Objectives, Partner Countries). The main area shows six project cards:

- ArcticFoodWhey** (CLIMATE CHANGE): Utilization of by-products of cheese-making and production of whey in Northern area. Image shows cheese production.
- Ar2CorD** (CLIMATE CHANGE): Low Carbon Concrete for Arctic Climate with Excellent Sustainability and Durability. Image shows a building under construction in a snowy landscape.
- Arctic Edge** (INNOVATION): Supply Chain Integration for Interoperability & Enhanced Resilience of SMEs in remote regions. Image shows a cargo ship.
- Cooperation Opportunities** (COOPERATION OPPORTUNITIES): Image shows people at a table with a map.
- Climate Change** (CLIMATE CHANGE): Image shows a field of golden wheat.
- Climate Change** (CLIMATE CHANGE): Image shows a wooden structure in a snowy forest.

Support for project and partnership development

Partner Search event
Cork, Ireland
19-20th March 2025

Last day for registration
28th February 2025

Special offer for early birds!



Support for project and partnership development

Stay tuned!

- LinkedIn group
- Follow [#InterregArcticCooperation](#)



Get in touch

- **Interreg NPA**
Christopher.Parker@interreg-npa.eu
- **Interreg Aurora**
interregaurora@lansstyrelsen.se
- **#InterregArcticCooperation**



Closing Remarks



Final question

Scan the QR code or
click the link in the
Zoom comments to
join the SLIDO poll.





Thank You!